

Transformer System

Al-Cu bimetallic through connectors

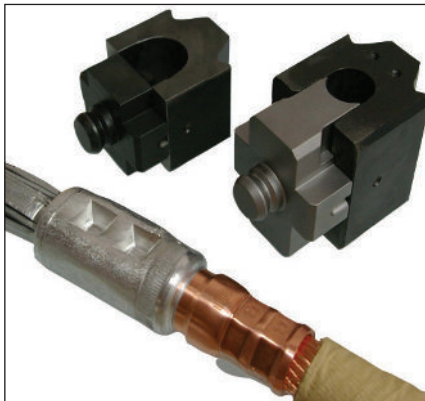


Products for connecting aluminium windings and copper conductors with bimetallic connectors, optimized for transformer manufacture.

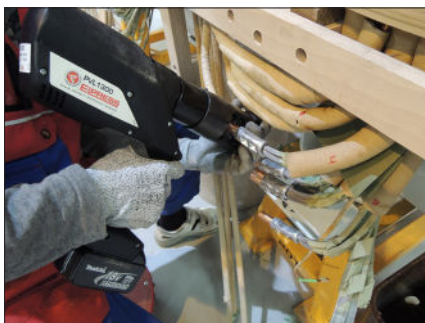
Working range
Aluminium: 20-310 mm².
Copper: 10-185 mm².



Tools for pre-rounding & crimping



Elpress punch and matrix for pre-rounding.



Crimping with Elpress battery powered crimp tool PVX1300.

Cat. No.	Winding size, mm ²	Al pre-rounding matrix / punch	Al crimping matrix / punch	Cu size	Cu crimp dies
AKS30L-10	20-40	13R7.5ML-AL/DL-AL	13P13M2/D2	10	13B8
AKS30L-16	20-40	13R7.5ML-AL/DL-AL	13P13M2/D2	16	13B9
AKS35L-10	35-50	13R8ML-AL/DL-AL	13P20M2/D2	10	13B8
AKS35L-16	35-50	13R8ML-AL/DL-AL	13P20M2/D2	16	13B9
AKS35L-25	35-50	13R8ML-AL/DL-AL	13P20M2/D2	25	13B11L
AKS50L-10	50-70	13R9ML-AL/DL-AL	13P20M2/D2	10	13B8
AKS50L-16	50-70	13R9ML-AL/DL-AL	13P20M2/D2	16	13B9
AKS50L-25	50-70	13R9ML-AL/DL-AL	13P20M2/D2	25	13B11L
AKS50L-35	50-70	13R9ML-AL/DL-AL	13P20M2/D2	35	13B13L
AKS50L-50	50-70	13R9ML-AL/DL-AL	13P20M2/D2	50	13B14,5L
AKS70L-35	70-100	13R10ML-AL/DL-AL	13P20M2/D2	35	13B13L
AKS70L-50	70-100	13R10ML-AL/DL-AL	13P20M2/D2	50	13B14,5L
AKS70L-70	70-100	13R10ML-AL/DL-AL	13P20M2/D2	70	13B17L
AKS95L-35	100-125	13R12ML-AL/DL-AL	13P25M2/D2	35	13B13L
AKS95L-50	100-125	13R12ML-AL/DL-AL	13P25M2/D2	50	13B14,5L
AKS95L-70	100-125	13R12ML-AL/DL-AL	13P25M2/D2	70	13B17L
AKS120L-50	125-160	13R13ML-AL/DL-AL	13P25M2/D2	50	13B14,5L
AKS120L-70	125-160	13R13ML-AL/DL-AL	13P25M2/D2	70	13B17L
AKS120L-95	125-160	13R13ML-AL/DL-AL	13P25M2/D2	95	13B20L
AKS150L-70	160-216	13R15ML-AL/DL-AL	13P25M2/D2	70	13B17L
AKS150L-95	160-216	13R15ML-AL/DL-AL	13P25M2/D2	95	13B20L
AKS150L-120	160-216	13R15ML-AL/DL-AL	13P25M2/D2	120	13B22L
AKS185L-95	216-270	13R17ML-AL/DL-AL	13P32M2/D2	95	13B20L
AKS185L-120	216-270	13R17ML-AL/DL-AL	13P32M2/D2	120	13B22L
AKS185L-150	216-270	13R17ML-AL/DL-AL	13P32M2/D2	150	13B25L
AKS240L-120	270-310	13R19ML-AL/DL-AL	13P32M2/D2	120	13B22L
AKS240L-150	270-310	13R19ML-AL/DL-AL	13P32M2/D2	150	13B25L
AKS240L-185	270-310	13R19ML-AL/DL-AL	13P32M2/D2	185	13B27L

