

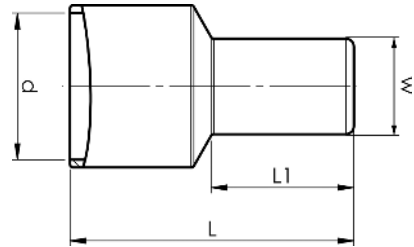


ELPRESS[®]

Product Datasheet

End connector sleeves fully insulated

1 - 6 mm²



mm ² (Cu)	AWG Cu	Name	d (mm)	L	L1	s	Tool	Insulation material	Easy Entry	Material	Pcs/pack	Tool
1-3	18-13	A2500E	6,4	15,2	8	8	GSA0760	PA	Yes	Cu/Sn	100	GSA0760
4-6	12-10	A4600E	9,2	17,7	9	9	GSA0760	PA	Yes	Cu/Sn	100	GSA0760

s = strip length



ELPRESS[®]