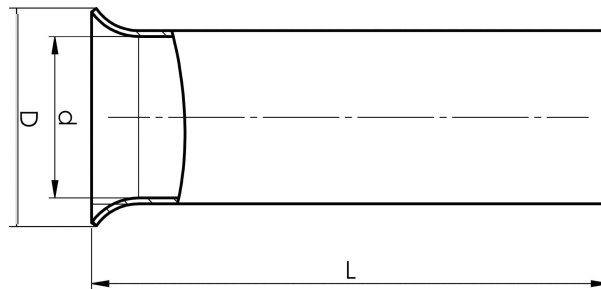


Uninsulated end terminals 0.25 - 50 mm²

B1,5-12ET

- ✓ Material: Cu 99.95%, tin plated Cu/Sn, dimensions according to DIN46228, CSA approved.



Uninsulated end terminal, 1.5 mm². Used with certified tool PEB0110T.



Item number: **7304-005400**

EAN: **7393487013421**

d (mm): **1.7**

D (mm): **2,8**

L (mm): **12**

s (mm) - strip length: **12**

Working temperature, Min (°C): **-5**

Working temperature, Max (°C): **105**

Material: **Cu, Cu/Sn**

Measures acc DIN46228: **Yes**

AWG/MCM Cu: **16 AWG**

mm² Cu: **1,5**