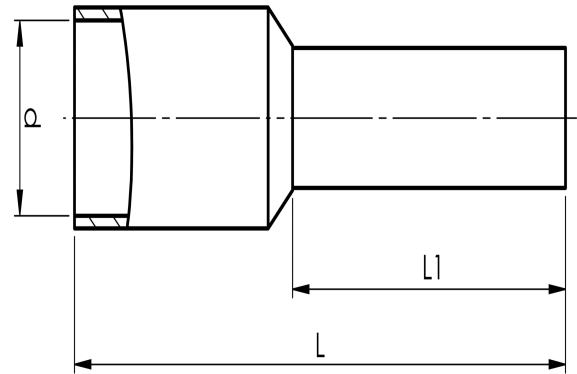


Pre-insulated end terminals 0.14 - 120 mm² ET,
standard colour

A0,75-6ET

- ✓ Material: Cu 99.95%, tin plated Cu/Sn, CSA approved.
- ✓ Polypropylene insulation, dimensions according to DIN46228, colour code W.

Pre-insulated end terminal ET, 0.75 mm². Used with certified tool PEB0110T.



Item number: **7287-006500**

EAN: **7393487013025**

d (mm): **2.8**

L1 (mm): **6**

L (mm): **12**

s (mm) - strip length: **8**

Working temperature, Min (°C): **-5**

Working temperature, Max (°C): **105**

Insulation material: **PP**

Insulation colour: **White (end sleeves)**

Material: **Cu, Cu/Sn**

Measures acc DIN46228: **Yes**

AWG/MCM Cu: **18 AWG**

mm² Cu: **0,75**