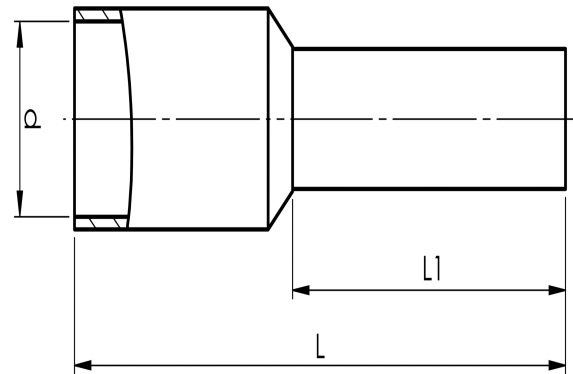
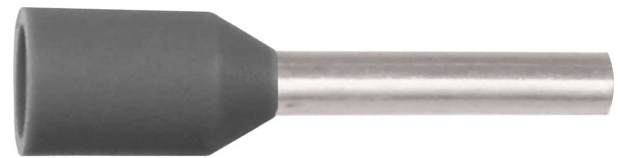


Pre-insulated end terminals 0.14 - 120 mm<sup>2</sup> ET,  
standard colour

# A0,14-6ET

- ✓ Material: Cu 99.95%, tin plated Cu/Sn, CSA approved.
- ✓ Polypropylene insulation, colour code W.

Pre-insulated end terminal ET, 0.14 mm<sup>2</sup>.



Item number: **7287-005000**

EAN: **7393487046856**

d (mm): **1.9**

L1 (mm): **6**

L (mm): **10**

s (mm) - strip length: **8**

Working temperature, Min (°C): **-5**

Working temperature, Max (°C): **105**

Insulation material: **PP**

Insulation colour: **Grey (end sleeves)**

Material: **Cu, Cu/Sn**

AWG/MCM Cu: **26 AWG**

mm<sup>2</sup> Cu: **0,14**