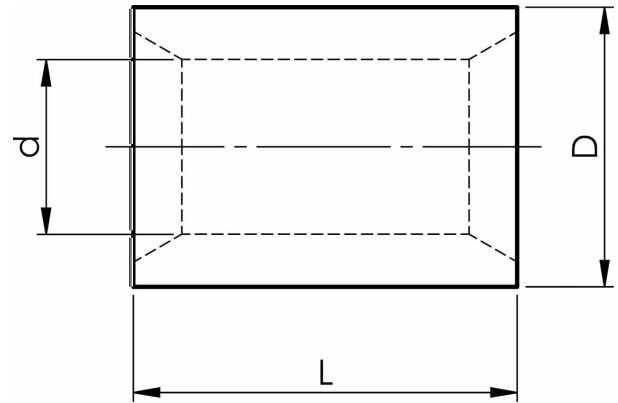


KSxP parallel connectors for conductors total 10 - 630 mm<sup>2</sup>

# KS95P

- ✓ Material: Cu 99.95%, tin plated Cu/Sn.
- ✓ For stranded (class 2) and multi-stranded (class 5) Cu conductors, for multi-stranded Cu conductors contact crimping using the Dual system is recommended.



Uninsulated parallel connector for multi-stranded (class 5) and stranded (class 2) Cu conductors, 95 mm<sup>2</sup>. Used with Elpress certified systems V600, V1300.



Item number: **7303-050900**  
EAN: **7393487047549**

d (mm): **15**  
D (mm): **20**  
L (mm): **20**

AWG/MCM Cu: **3/0 AWG**  
mm<sup>2</sup> Cu: **86-111**