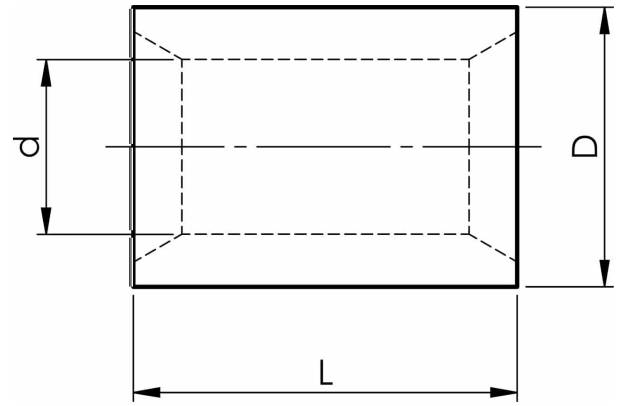


KSxP parallel connectors for conductors total 10 - 630 mm²

KS240P

- ✓ Material: Cu 99.95%, tin plated Cu/Sn.
- ✓ For stranded (class 2) and multi-stranded (class 5) Cu conductors, for multi-stranded Cu conductors contact crimping using the Dual system is recommended.



Uninsulated parallel connector for multi-stranded (class 5) and stranded (class 2) Cu conductors, 240 mm². Used with Elpress certified systems V1300, V250.



Item number: **7303-051300**
EAN: **7393487047587**

d (mm): **24**
D (mm): **30**
L (mm): **30**

AWG/MCM Cu: **450 MCM**
mm² Cu: **220-255**