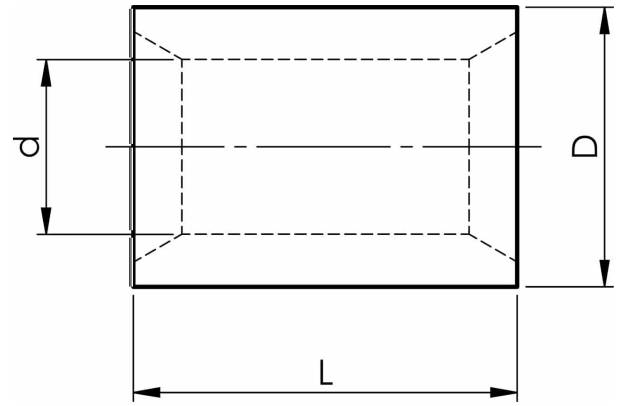


KSxP parallel connectors for conductors total 10 - 630 mm²

KS185P

- ✓ Material: Cu 99.95%, tin plated Cu/Sn.
- ✓ For stranded (class 2) and multi-stranded (class 5) Cu conductors, for multi-stranded Cu conductors contact crimping using the Dual system is recommended.



Uninsulated parallel connector for multi-stranded (class 5) and stranded (class 2) Cu conductors, 185 mm². Used with Elpress certified systems V1300, V250.



Item number: **7303-051200**
EAN: **7393487047570**

d (mm): **21**
D (mm): **27**
L (mm): **28**

AWG/MCM Cu: **350 MCM**
mm² Cu: **170-210**