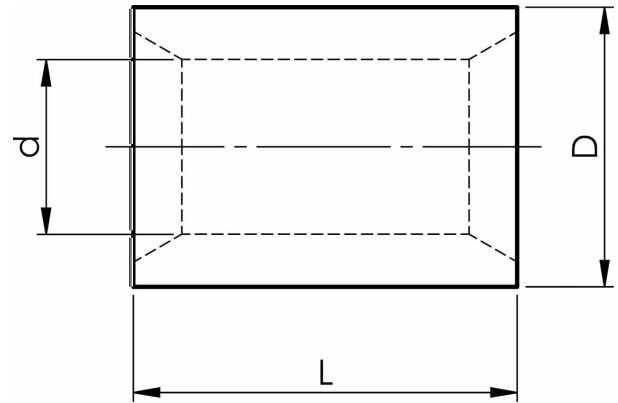


KSxP parallel connectors for conductors total 10 - 630 mm<sup>2</sup>

# KS150P

- ✓ Material: Cu 99.95%, tin plated Cu/Sn.
- ✓ For stranded (class 2) and multi-stranded (class 5) Cu conductors, for multi-stranded Cu conductors contact crimping using the Dual system is recommended.



Uninsulated parallel connector for multi-stranded (class 5) and stranded (class 2) Cu conductors, 150 mm<sup>2</sup>. Used with Elpress certified systems V1300, V250.



Item number: **7303-051100**  
EAN: **7393487047563**

d (mm): **19**  
D (mm): **25**  
L (mm): **26**

AWG/MCM Cu: **300 MCM**  
mm<sup>2</sup> Cu: **136-166**