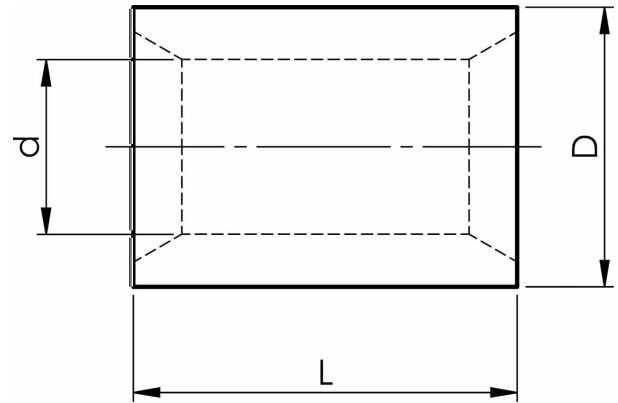


KSxP parallel connectors for conductors total 10 - 630 mm<sup>2</sup>

# KS120P

- Material: Cu 99.95%, tin plated Cu/Sn.
- For stranded (class 2) and multi-stranded (class 5) Cu conductors, for multi-stranded Cu conductors contact crimping using the Dual system is recommended.



Uninsulated parallel connector for multi-stranded (class 5) and stranded (class 2) Cu conductors, 120 mm<sup>2</sup>. Used with Elpress certified systems V600, V1300.



Item number: **7303-051000**

EAN: **7393487047556**

d (mm): **17**

D (mm): **22**

L (mm): **26**

AWG/MCM Cu: **250 MCM**

mm<sup>2</sup> Cu: **111-130**