

KS/KSF through connectors with partition 10-500 mm<sup>2</sup>

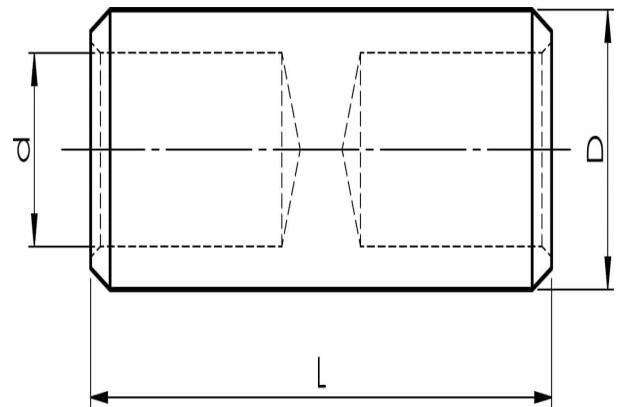
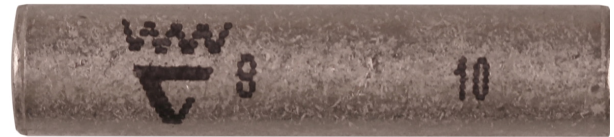
# KS10M

- ✓ Material: Cu 99.95%, tin plated Cu/Sn.
- ✓ With partition to prevent oil leakage.
- ✓ For stranded (class 2) and multi-stranded (class 5) Cu conductors, for multi-stranded Cu conductors contact crimping using the Dual system is recommended.
- ✓ UL approved.

**Examples of marking: 8 10 (Elpress logotype is not included on the marking)**

8 = Die No. 10 = mm<sup>2</sup>

Uninsulated through connector for multi-stranded (class 5) and stranded (class 2) Cu conductors, 10 mm<sup>2</sup>. Used with Elpress certified systems V600, V1300, V250.



Item number: **7303-102200**

EAN: **7393487015678**

d (mm): **5**

D (mm): **8**

L (mm): **36**

s (mm) - strip length: **18**

AWG/MCM Cu: **8 AWG**

mm<sup>2</sup> Cu: **10**