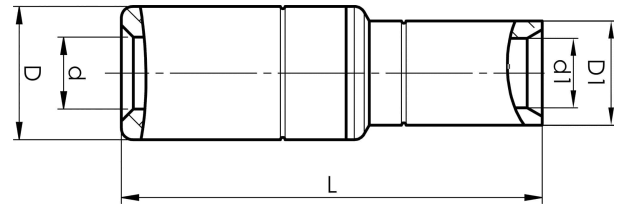


Aluminium-copper through connectors 16 - 500  
mm<sup>2</sup>

# AKS50-35

- ✓ Connector from Al conductor to Cu conductor.
- ✓ Stranded/solid Al conductors, stranded/multi-stranded Cu conductors.
- ✓ For multi-stranded Cu conductors, contact crimping using the Dual system is recommended.
- ✓ Two crimps are required for Al, normally one for Cu.

AlCu through connector, from Al conductor to Cu conductor. For stranded Al cable 50 mm<sup>2</sup>, or for solid Al cable 70 mm<sup>2</sup>, to stranded/multi-stranded Cu cable 35 mm<sup>2</sup>. When crimping the Cu section, place the dies between the mark on the sleeve and the edge of the Cu section. Used with Elpress certified systems V1300, V250.



Item number: **7333-400700**

EAN: **7393487009745**

s1 (mm): **19**

d (mm): **9.6**

D (mm): **20**

L (mm): **71**

d1 (mm): **9**

D1 (mm): **13**

s (mm) - strip length: **45**

AWG/MCM Stranded Al: **1/0 AWG**

AWG/MCM Solid Al: **20 AWG**

AWG/MCM Cu: **2 AWG**

mm<sup>2</sup> Stranded Al: **50**

mm<sup>2</sup> Solid Al: **70**

mm<sup>2</sup> Cu: **35**

Screen conductor (mm<sup>2</sup>): **41**