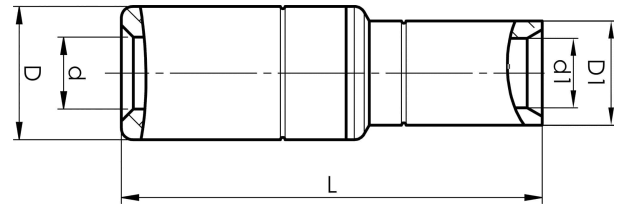


Aluminium-copper through connectors 16 - 500
mm²

AKS35-25

- ✓ Connector from Al conductor to Cu conductor.
- ✓ Stranded/solid Al conductors, stranded/multi-stranded Cu conductors.
- ✓ For multi-stranded Cu conductors, contact crimping using the Dual system is recommended.
- ✓ Two crimps are required for Al, normally one for Cu.

AlCu through connector, from Al conductor to Cu conductor. For stranded Al cable 35 mm², or for solid Al cable 50 mm², to stranded/multi-stranded Cu cable 25 mm². When crimping the Cu section, place the dies between the mark on the sleeve and the edge of the Cu section. Used with Elpress certified systems V1300, V250.



Item number: **7333-400400**

EAN: **7393487009714**

s1 (mm): **17**

d (mm): **8.5**

D (mm): **20**

L (mm): **69**

d1 (mm): **8**

D1 (mm): **11**

s (mm) - strip length: **45**

AWG/MCM Stranded Al: **2 AWG**

AWG/MCM Solid Al: **10 AWG**

AWG/MCM Cu: **4 AWG**

mm² Stranded Al: **35**

mm² Solid Al: **50**

mm² Cu: **25**

Screen conductor (mm²): **21-29**