

Aluminium-copper through connectors 16 - 500
mm²

AKS300B- 240A

- ✓ Used for splicing Al conductors and Cu conductors
- ✓ Stranded/solid Al conductors, stranded/flexible Cu conductors.
- ✓ For multi-stranded Cu conductors, contact crimping using the Dual system is recommended.
- ✓ Two crimps are needed for Al.

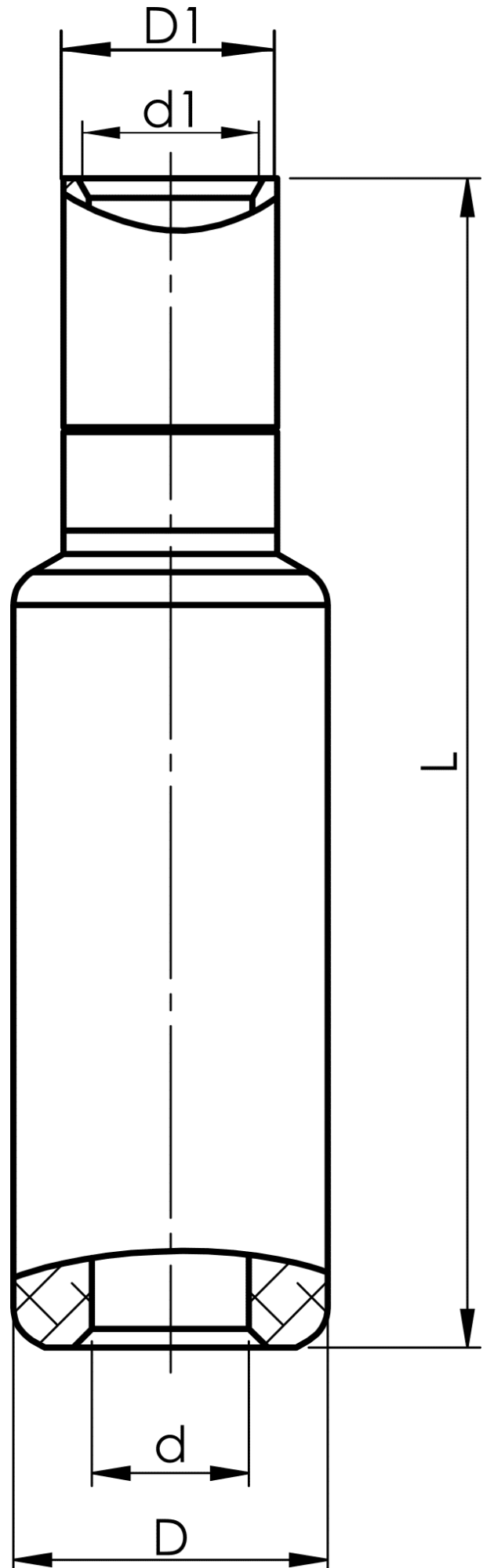
AlCu through connector for stranded/solid Al cable 300 mm² to stranded/flexible Cu cable 240 mm².
When crimping the Cu section, place the dies between the mark on the sleeve and the edge of the Cu section. Used with Elpress certified systems V1300, V250.



Item number: **7333-448400**
EAN: **7393487060609**

s1 (mm): **40**
d (mm): **22.3**
D (mm): **37**
L (mm): **126.5**
d1 (mm): **22.5**
D1 (mm): **29**
s (mm) - strip length: **68**

AWG/MCM Stranded Al: **550 MCM**
AWG/MCM Cu: **450 MCM**
mm² Stranded Al: **300**
mm² Cu: **240**



ELPRESS