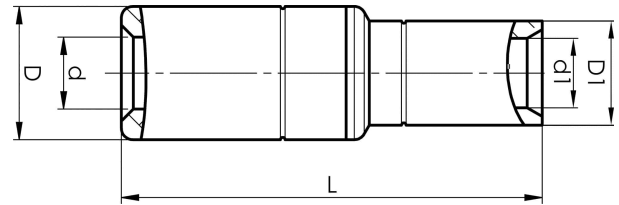


Aluminium-copper through connectors 16 - 500
mm²



AKS240- 240A

- ✓ Connector from Al conductor to Cu conductor.
- ✓ Stranded/solid Al conductors, stranded/multi-stranded Cu conductors.
- ✓ For multi-stranded Cu conductors, contact crimping using the Dual system is recommended.
- ✓ Two crimps are required for Al, normally one for Cu.

AlCu through connector, from Al conductor to Cu conductor. For stranded Al cable 240 mm² to stranded/multi-stranded Cu cable 240 mm². When crimping the Cu section, place the dies between the mark on the sleeve and the edge of the Cu section. Used with Elpress certified systems V1300, V250.



Item number: **7333-403300**
EAN: **7393487010000**

s1 (mm): **29.9**
d (mm): **19.8**
D (mm): **32**
L (mm): **104**
d1 (mm): **22.5**
D1 (mm): **29**
s (mm) - strip length: **61**

AWG/MCM Stranded Al: **450 MCM**
AWG/MCM Cu: **450 MCM**
mm² Stranded Al: **240**
mm² Cu: **240**