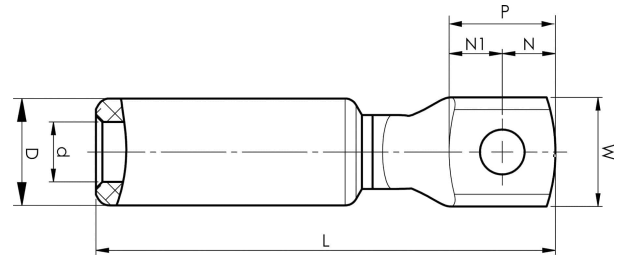


Aluminium-copper terminals 16 - 1200 mm²

AKK500B-16

- ✓ Used for connection of Al conductors for apparatus outlets and busbars of Cu.
- ✓ Two crimps are needed.



AlCu terminal for stranded Al cable 500 mm², with an M16 hole in the palm. Used with Elpress certified system V250.



Item number: **7331-399700**

EAN: **7393487022386**

W (mm): **42**

N (mm): **21**

N1 (mm): **21**

P (mm): **42**

d (mm): **28**

D (mm): **44**

L (mm): **174**

t (mm) - palm thickness: **10**

s (mm) - strip length: **83**

Screw: **M16**

AWG/MCM Stranded Al: **950 MCM**

mm² Stranded Al: **500**