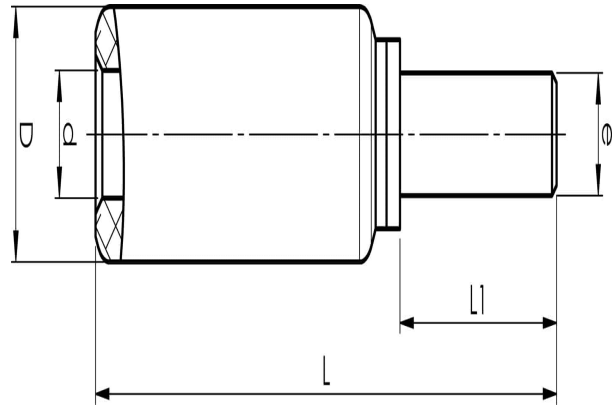


Aluminium-copper pin sockets 16 - 300 mm²

AKP50

- ✓ Used for connection of Al conductors to apparatus with copper connectors.
- ✓ Two crimps are needed.

AlCu pin terminal for stranded Al cable 50 mm², or for solid Al cable 70 mm². Used with Elpress certified systems V1300, V250.



Item number: **7337-400500**

EAN: **7393487010260**

e (mm): **9**

d (mm): **9.6**

D (mm): **20**

L (mm): **88**

s (mm) - strip length: **45**

AWG/MCM Stranded Al: **1/0 AWG**

AWG/MCM Solid Al: **20 AWG**

mm² Stranded Al: **50**

mm² Solid Al: **70**