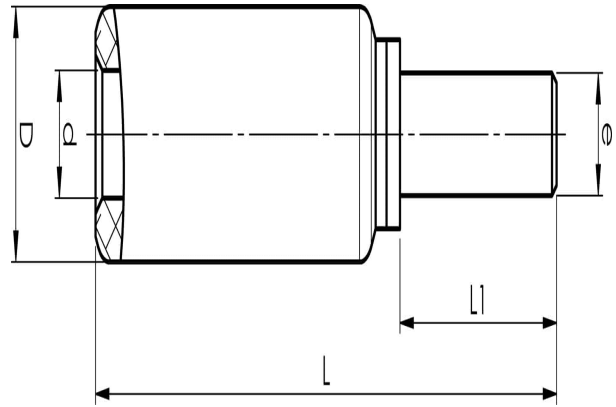


Aluminium-copper pin sockets 16 - 300 mm²

AKP16

- ✓ Used for connection of Al conductors to apparatus with copper connectors.
- ✓ Two crimps are needed.

AlCu pin terminal for stranded Al cable 16 mm², or for solid Al cable 25 (16) mm². Used with Elpress certified systems V1300, V250.



Item number: **7337-400200**

EAN: **7393487010239**

e (mm): **6**

d (mm): **5.9**

D (mm): **13**

L (mm): **56**

s (mm) - strip length: **29**

AWG/MCM Stranded Al: **6 AWG**

AWG/MCM Solid Al: **4 AWG**

mm² Stranded Al: **16**

mm² Solid Al: **25 (16)**