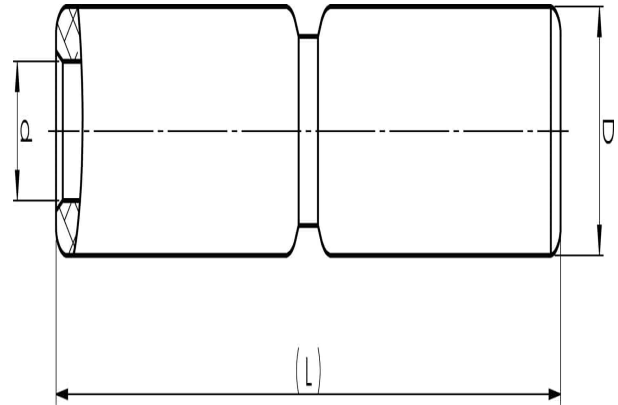


Aluminium through connectors with partition 16 -
1200 mm²

AS35

- ✓ Used primarily for splicing two Al conductors with the same area.
- ✓ Two plus two crimps are needed.
- ✓ With partition.

Al through connector with partition for stranded Al cable 35 mm², or for solid Al cable 50 mm². Used with Elpress certified systems V1300, V250.



Item number: **7313-400400**

EAN: **7393487009059**

d (mm): **8.5**

D (mm): **20**

L (mm): **100**

s (mm) - strip length: **45**

AWG/MCM Stranded Al: **2 AWG**

AWG/MCM Solid Al: **1/0 AWG**

mm² Stranded Al: **35**

mm² Solid Al: **50**