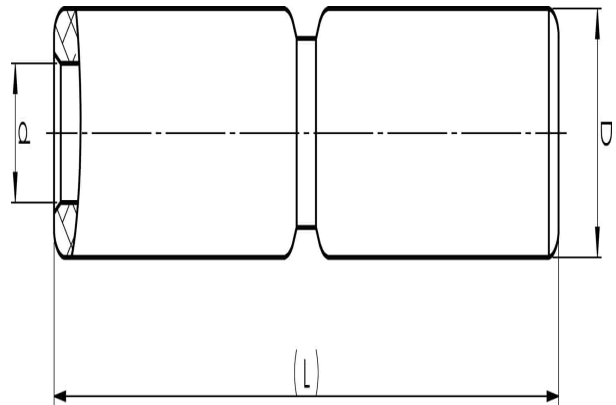


Aluminium through connectors with partition 16 -  
1200 mm<sup>2</sup>

# AS16

- ✓ Used primarily for splicing two Al conductors with the same area.
- ✓ Two plus two crimps are needed.
- ✓ With partition.

Al through connector with partition for stranded Al cable 16 mm<sup>2</sup>, or for solid Al cable 25 (+16) mm<sup>2</sup>.  
Used for splicing Al conductors of equal areas.  
Used with Elpress certified systems V1300, V250.



Item number: **7313-400200**  
EAN: **7393487009035**

d (mm): **5.9**  
D (mm): **13**  
L (mm): **67**  
s (mm) - strip length: **29**

AWG/MCM Stranded Al: **6 AWG**  
AWG/MCM Solid Al: **4 AWG**  
mm<sup>2</sup> Stranded Al: **16**  
mm<sup>2</sup> Solid Al: **25**