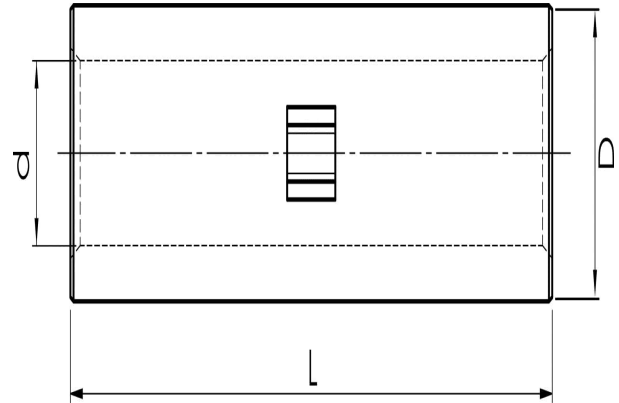
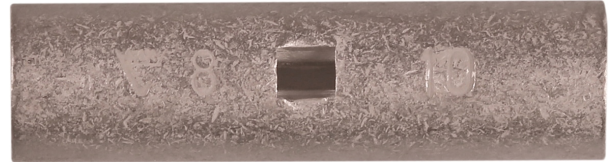


Joining sleeves 0.75 - 10 mm², KS/KSF through connectors 0.75 - 800 mm²

KS10

- ✓ Material: Cu 99.95%, tin plated Cu/Sn.
- ✓ Inspection hole and int. cable stop.
- ✓ For stranded (class 2) and multi-stranded (class 5) Cu conductors, for multi-stranded Cu conductors contact crimping using the Dual system is recommended.
- ✓ UL-approved.

Uninsulated through connector for multi-stranded (class 5) and stranded (class 2) Cu conductors, 10 mm². Used with certified tool GWB4099 or ES2258.



Item number: **7303-000700**

EAN: **7393487007888**

d (mm): **5**

D (mm): **8**

L (mm): **30**

s (mm) - strip length: **15**

AWG/MCM Cu: **8 AWG**

mm² Cu: **10**