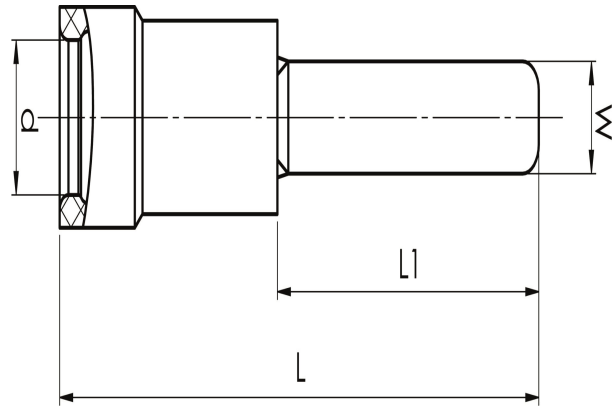


Blade terminals 0.25 - 6 mm²

A2529SF

- ✓ Material: Cu 99.95%, tin plated Cu/Sn, brazed neck.
- ✓ Insulation halogen-free PC, Easy-entry without tab.

Pre-insulated blade terminal for 1.5-2.5 mm² cable.
Used with certified tool GSA0760.



Item number: **7278-252900**

EAN: **7393487004252**

W (mm): **2.9**

d (mm): **4.3**

L1 (mm): **11.5**

L (mm): **21.5**

t (mm) - palm thickness: **0.8**

s (mm) - strip length: **8**

Insulation material: **PC**

Insulation colour: **Blue (insulated terminals)**

Material: **Cu, Cu/Sn**

AWG/MCM Cu: **16 - 14 AWG**

mm² Cu: **1,5-2,5**