

KS/KSF through connectors with partition 10-500 mm<sup>2</sup>

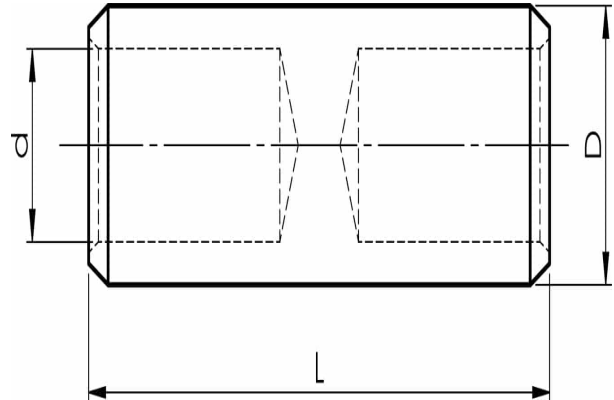
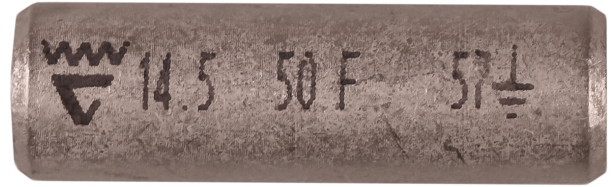
# KSF50M

- ✓ Material: Cu 99.95%, tin plated Cu/Sn.
- ✓ With partition to prevent oil leakage.
- ✓ For stranded (class 2) and multi-stranded (class 5) Cu conductors, for multi-stranded Cu conductors contact crimping using the Dual system is recommended.
- ✓ UL-approved, DNV approved.

**Examples of marking: 20 95F (Elpress logotype is included on the marking.)**

20 = Die No. 95 = mm<sup>2</sup> F = type KSF for stranded and flexible conductors 111 = screen mm<sup>2</sup>

Uninsulated through connector for multi-stranded (class 5) and stranded (class 2) Cu conductors, 50 mm<sup>2</sup>. Used with Elpress certified systems V600, V1300, V250.



Item number: **7303-102600**

EAN: **7393487015715**

d (mm): **11**

D (mm): **14,5**

L (mm): **48**

s (mm) - strip length: **22**

AWG/MCM Cu: **1/0 AWG**

mm<sup>2</sup> Cu: **50**

Screen conductor (mm<sup>2</sup>): **57**