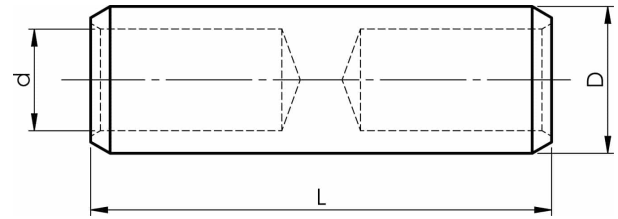


KS/KSF through connectors with partition 10-500 mm<sup>2</sup>

# KSF150M

- ✓ Material: Cu 99.95%, tin plated Cu/Sn.
- ✓ With partition to prevent oil leakage.
- ✓ For stranded (class 2) and multi-stranded (class 5) Cu conductors, for multi-stranded Cu conductors contact crimping using the Dual system is recommended.
- ✓ UL-approved, DNV approved.



## Examples of marking: 20 95F (Elpress logotype is included on the marking.)

20 = Die No. 95 = mm<sup>2</sup> F = type KSF for stranded and flexible conductors 111 = screen mm<sup>2</sup>

Uninsulated through connector for multi-stranded (class 5) and stranded (class 2) Cu conductors, 150 mm<sup>2</sup>. Used with Elpress certified systems V600, V1300, V250.



Item number: **7303-103000**

EAN: **7393487015753**

d (mm): **19**

D (mm): **25**

L (mm): **64**

s (mm) - strip length: **28**

AWG/MCM Cu: **300 MCM**

mm<sup>2</sup> Cu: **150**