

KS/KSF through connectors 0.75 - 800 mm<sup>2</sup>

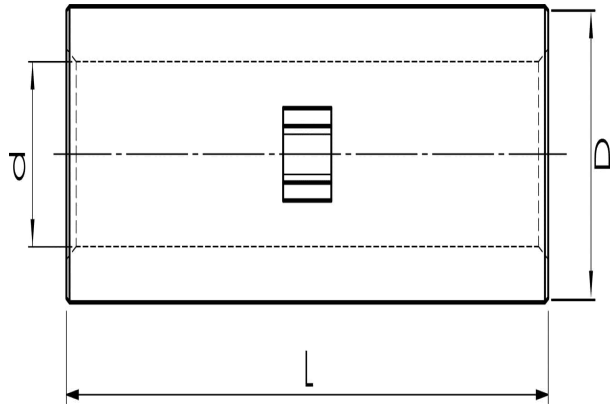
# KSF800

- ✓ Material: Cu 99.95%, tin plated Cu/Sn.
- ✓ Inspection hole and int. cable stop.
- ✓ For stranded (class 2) and multi-stranded (class 5) Cu conductors, for multi-stranded Cu conductors contact crimping using the Dual system is recommended

**Examples of marking: 20 95F (Elpress logotype is included on the marking.)**

20 = Die No. 95 = mm<sup>2</sup> F = type KSF for stranded and flexible conductors 111 = screen mm<sup>2</sup>

Uninsulated through connector for multi-stranded (class 5) and stranded (class 2) Cu conductors, 800 mm<sup>2</sup>. Used with Elpress certified systems V250, V1470.



Item number: **7303-231600**

EAN: **7393487019775**

d (mm): **42.5**

D (mm): **53**

L (mm): **175**

s (mm) - strip length: **88**

AWG/MCM Cu: **1500 MCM**

mm<sup>2</sup> Cu: **800**