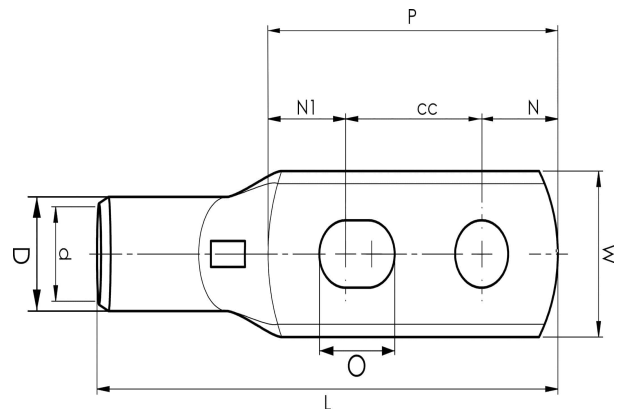


KRF tube terminals with two holes

KRF120- 10X2-24-26

- ✓ Material: Cu 99.95%, tin plated Cu/Sn.
- ✓ Inspection hole.
- ✓ For stranded (class 2) and multi-stranded (class 5) Cu conductors, for multi-stranded Cu conductors contact crimping using the Dual system is recommended.
- ✓ UL-approved.



Example of marking KRF: 17 (neck) Elpress logotype 70 10F (palm)

17 = Die No. 70 = mm² 10 = palm hole for M10 F = type KRF for stranded and flexible conductors.
2 holed tube terminal for multi-stranded (class 5) and stranded (class 2) Cu-conductors (acc. to IEC 60228), 120 mm², with two M10 holes in the palm.
Used with Elpress certified systems V600, V1300 or V250.



Item number: **7301-440700**

EAN: **7393487016798**

W (mm): **32**

N (mm): **11**

N1 (mm): **19**

P (mm): **55**

cc (mm): **25**

O (mm): **12.5**

f (mm): **1**

d (mm): **17**

D (mm): **22**

L (mm): **97**

t (mm) - palm thickness: **4.9**

s (mm) - strip length: **27**

Screw: **M10x2**

Inspection hole: **Yes**

AWG/MCM Cu: **4/0 AWG**

mm² Cu: **120**

ELPRESS