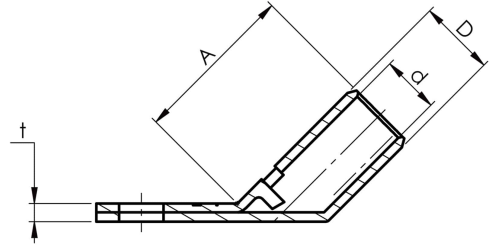


KRF angled terminals 45°

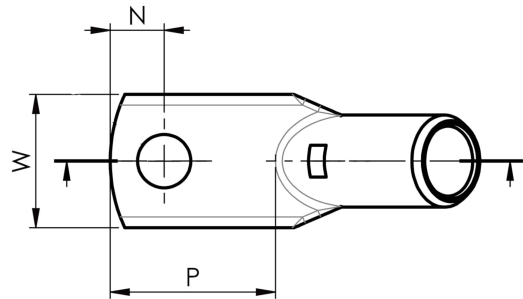
# KRF16-8- 45GR

- ✓ Material: Cu 99.95%, tin plated Cu/Sn.
- ✓ Inspection hole
- ✓ For stranded (class 2) and multi-stranded (class 5) Cu conductors, for multi-stranded Cu conductors contact crimping using the Dual system is recommended.
- ✓ DNV approved.



## Example of marking KRF: 17 (neck) Elpress logo 70 10F (palm)

17 = Die No. 70 = mm<sup>2</sup> 10 = palm hole for M10 F = type KRF for stranded and flexible conductors. Angled tube terminal 45° for multi-stranded (class 5) and stranded (class 2) Cu conductors (acc. to IEC 60228), 16 mm<sup>2</sup>, with an M8 hole in the palm. Used with Elpress certified systems V600, V1300, V250.



UK  
CA

Item number: **7301-125500**  
EAN: **7393487016101**

A (mm): **23**  
W (mm): **13**  
N (mm): **8.5**  
N1 (mm): **12**  
P (mm): **20.5**  
d (mm): **6**  
D (mm): **9**  
t (mm) - palm thickness: **2.7**  
s (mm) - strip length: **12**

Screw: **M8**  
Angle (°): **45**  
Inspection hole: **Yes**

AWG/MCM Cu: **6 AWG**  
mm<sup>2</sup> Cu: **16**

**ELPRESS**