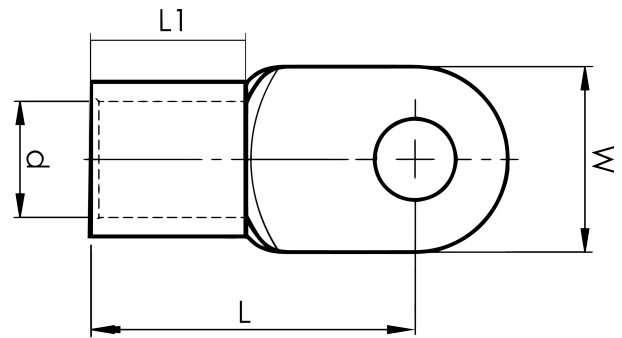


DIN 46234 sheet metal terminals 10 - 185 mm²

B10-10R

- ✓ dimensions according to DIN 46234
- ✓ material: 99.9% Cu, tin plated (Cu/Sn)



Sheet metal terminal for 10 mm² copper conductors with an M10 hole in the palm. Used with Elpress certified systems V600, V1300 or V250.



Item number: **7258-265800**
EAN: **7393487018488**

W (mm): **18**
d (mm): **4.5**
L1 (mm): **8**
L (mm): **21**
t (mm) - palm thickness: **1.1**

Screw: **M10**
Marking: **10**

AWG/MCM Cu: **8 AWG**
mm² Cu: **10**