

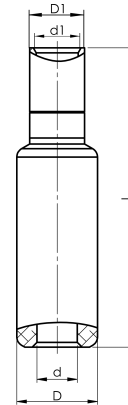
Aluminium-copper through connectors 16 - 500
mm²

AKS300SOLID- 300



- ✓ Connector from Al conductor to Cu conductor.
- ✓ Stranded/solid Al conductors, stranded/multi-stranded Cu conductors.
- ✓ For multi-stranded Cu conductors, contact crimping using the Dual system is recommended.
- ✓ Two crimps are required for Al, normally one for Cu.

AlCu through connector, from Al conductor to Cu conductor. For solid Al cable 300 mm² to the stranded/multi-stranded Cu cable 300 mm². When crimping the Cu section, place the dies between the mark on the sleeve and the edge of the Cu section. Used with Elpress certified system V250.



Item number: **7333-444600**
EAN: **7393487089884**

s1 (mm): **30**
d (mm): **20**
D (mm): **36**
L (mm): **124**
d1 (mm): **26**
D1 (mm): **32**
s (mm) - strip length: **83**

AWG/MCM Solid Al: **600**
AWG/MCM Cu: **550 MCM**
mm² Solid Al: **300**
mm² Cu: **300**