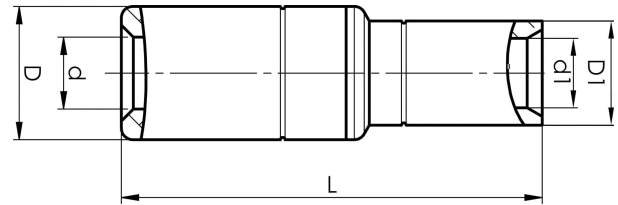


Aluminium-copper through connectors 16 - 500
mm²

AKS150-70

- ✓ Connector from Al conductor to Cu conductor.
- ✓ Stranded/solid Al conductors, stranded/multi-stranded Cu conductors.
- ✓ For multi-stranded Cu conductors, contact crimping using the Dual system is recommended.
- ✓ Two crimps are required for Al, normally one for Cu.

AlCu through connector, from Al conductor to Cu conductor. For stranded Al cable 150 mm², or for solid Al cable 185 mm², to stranded/multi-stranded Cu cable 70 mm². When crimping the Cu section, place the dies between the mark on the sleeve and the edge of the Cu section. Used with Elpress certified systems V1300, V250.



Item number: **7333-402200**

EAN: **7393487009899**

s1 (mm): **25**

d (mm): **15.8**

D (mm): **25**

L (mm): **93**

d1 (mm): **13**

D1 (mm): **17**

s (mm) - strip length: **61**

AWG/MCM Stranded Al: **300 MCM**

AWG/MCM Solid Al: **350 MCM**

AWG/MCM Cu: **2/0 AWG**

mm² Stranded Al: **150**

mm² Solid Al: **185**

mm² Cu: **70**

Screen conductor (mm²): **72-88**