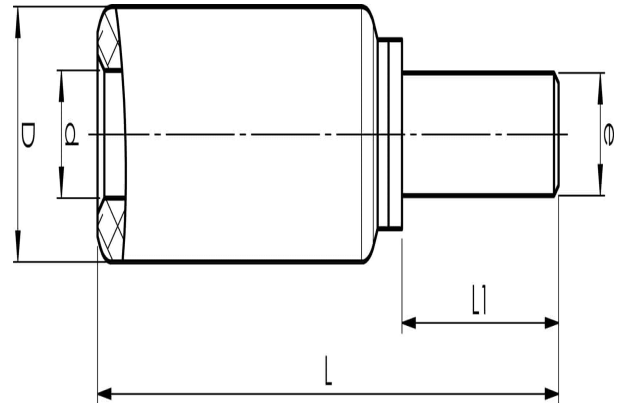


Aluminium-copper pin sockets 16 - 300 mm<sup>2</sup>

# AKP35

- ✓ Used for connection of Al conductors to apparatus with copper connectors.
- ✓ Two crimps are needed.

AlCu pin terminal for stranded Al cable 35 mm<sup>2</sup>, or for solid Al cable 50 mm<sup>2</sup>. Used with Elpress certified systems V1300, V250.



Item number: **7337-400400**

EAN: **7393487010253**

e (mm): **9**

d (mm): **8.5**

D (mm): **20**

L (mm): **78**

s (mm) - strip length: **45**

AWG/MCM Stranded Al: **2 AWG**

AWG/MCM Solid Al: **10 AWG**

mm<sup>2</sup> Stranded Al: **35**

mm<sup>2</sup> Solid Al: **50**