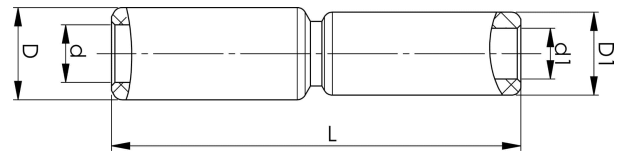


Through connectors with aluminium partitions with different areas 16 - 400 mm²

AS50-35

Al through connector with partition for stranded Al cable 50-35 mm², or for solid Al cable 70-50 mm².
Used for splicing Al conductors of different areas.
Used with Elpress certified systems V1300, V250.



Item number: **7313-005000**

EAN: **7393487015272**

s1 (mm): **45**

d (mm): **9.6**

D (mm): **20**

L (mm): **100**

d1 (mm): **8.5**

D1 (mm): **20**

s (mm) - strip length: **45**

AWG/MCM Stranded Al: **2 - 1/0 AWG**

AWG/MCM Solid Al: **2/0 AWG**

mm² Stranded Al: **50-35**

mm² Solid Al: **70-50**