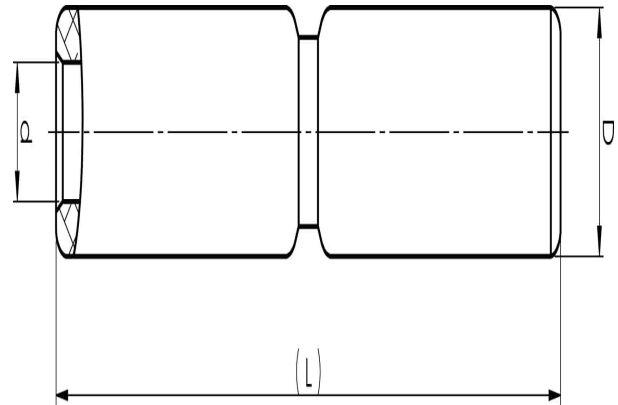


Aluminium through connectors with partition 16 -  
1200 mm<sup>2</sup>

# AS95

- ✓ Used primarily for splicing two Al conductors with the same area.
- ✓ Two plus two crimps are needed.
- ✓ With partition.

Al through connector with partition for stranded Al cable 95 mm<sup>2</sup>, or for solid Al cable 120 mm<sup>2</sup>. Used with Elpress certified systems V1300, V250.



Item number: **7313-400700**

EAN: **7393487009080**

d (mm): **12.5**

D (mm): **25**

L (mm): **130**

s (mm) - strip length: **57**

AWG/MCM Stranded Al: **3/0 AWG**

AWG/MCM Solid Al: **250**

mm<sup>2</sup> Stranded Al: **95**

mm<sup>2</sup> Solid Al: **120**