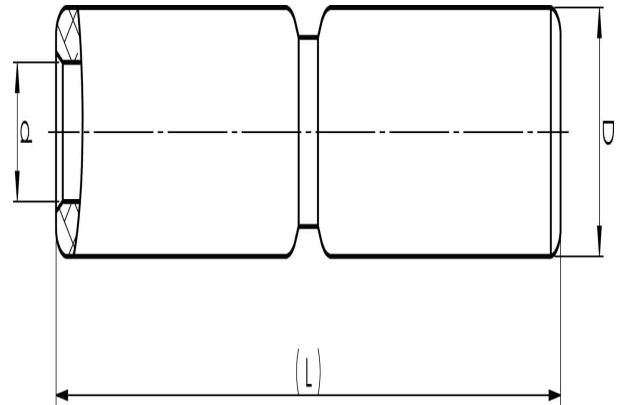


Aluminium through connectors with partition 16 -
1200 mm²

AS150

- ✓ Used primarily for splicing two Al conductors with the same area.
- ✓ Two plus two crimps are needed.
- ✓ With partition.

Al through connector with partition for stranded Al cable 150 mm², or for solid Al cable 185 mm². Used with Elpress certified systems V1300, V250.



Item number: **7313-400900**

EAN: **7393487009103**

d (mm): **15.8**

D (mm): **25**

L (mm): **130**

s (mm) - strip length: **58**

AWG/MCM Stranded Al: **300 MCM**

AWG/MCM Solid Al: **350 MCM**

mm² Stranded Al: **150**

mm² Solid Al: **185**