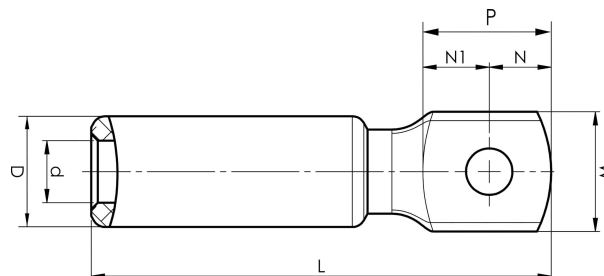


Aluminium terminals 16 - 1200 mm<sup>2</sup>

# AK50-12

- ✓ Used for connecting Al conductors to Al busbar.
- ✓ Two crimps are needed.



Al terminal for stranded Al cable 50 mm<sup>2</sup>, or for solid Al cable 70 mm<sup>2</sup> with an M12 hole in the palm. Used with Elpress certified systems V1300 or V250.



Item number: **7311-401500**

EAN: **7393487008786**

W (mm): **27**

N (mm): **14**

N1 (mm): **15**

P (mm): **29**

d (mm): **9.6**

D (mm): **20**

L (mm): **90**

t (mm) - palm thickness: **6**

s (mm) - strip length: **45**

Screw: **M12**

AWG/MCM Stranded Al: **1/0 AWG**

AWG/MCM Solid Al: **2/0 AWG**

mm<sup>2</sup> Stranded Al: **50**

mm<sup>2</sup> Solid Al: **70**