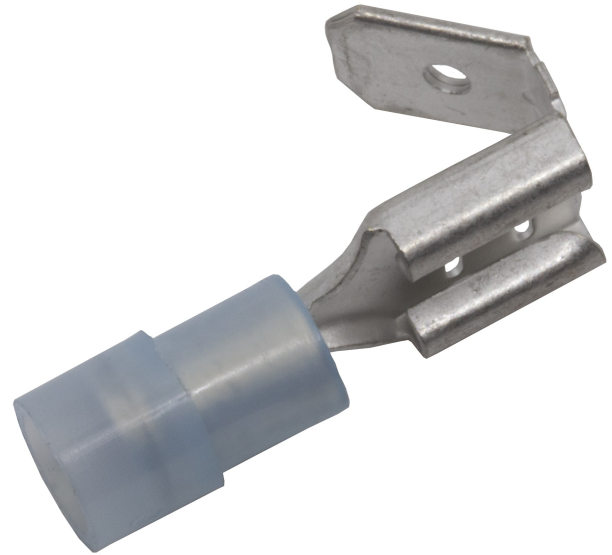


Multiple tabs, rolled type (piggy back) 0.5 - 2.5 mm²

A2507FLSH

- Material: brass, tin plated Cu/Sn, unbrazed neck with reinforcement sleeve.
- Insulation PA, not Easy-entry.

Pre-insulated receptacle "piggy back" for 1.5-2.5 mm² cable. Used with certified tool GSA0760.



Item number: **7487-500200**
EAN: **7393487005167**

W (mm): **6.9**
d (mm): **3.9**
L (mm): **22**
s (mm) - strip length: **8**

Insulation material: **PA**
Tab Size: **6,3x0,8**
Insulation colour: **Blue (insulated terminals)**
Material: **Brass, Cu/Sn**
Neck type: **Reinforcement sleeve**

AWG/MCM Cu: **16 - 14 AWG**
mm² Cu: **1,5-2,5**

