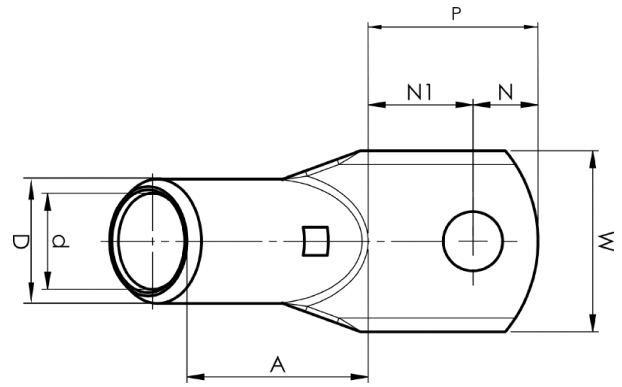
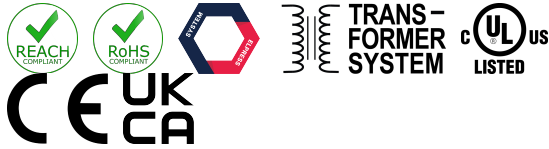


Tube terminals 45°, 25 - 400 mm<sup>2</sup>

# KRF95-10L- 45GR



Item number: **7301-172500**

EAN: **7393487048775**

A (mm): **40**

W (mm): **28**

N (mm): **11.5**

N1 (mm): **18.5**

P (mm): **30**

d (mm): **15**

D (mm): **20**

t (mm) - palm thickness: **4.9**

s (mm) - strip length: **25**

Screw: **M10**

Angle (°): **45**

Inspection hole: **Yes**

AWG/MCM Cu: **3/0 AWG**

mm<sup>2</sup> Cu: **95**

Winding (mm<sup>2</sup>): **113-161**