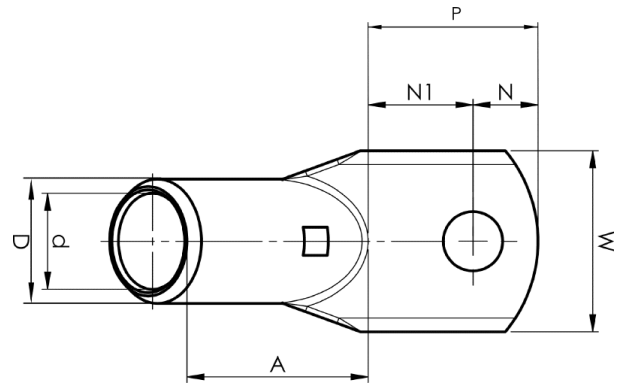
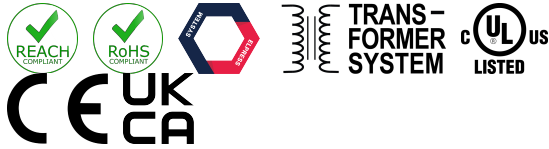


Tube terminals 45°, 25 - 400 mm²

KRF50-8L- 45GR



Item number: **7301-171900**

EAN: **7393487048751**

A (mm): **31**

W (mm): **21**

N (mm): **8.5**

N1 (mm): **17.5**

P (mm): **26**

d (mm): **11**

D (mm): **14,5**

t (mm) - palm thickness: **3.4**

s (mm) - strip length: **19**

Screw: **M8**

Angle (°): **45**

Inspection hole: **Yes**

AWG/MCM Cu: **1/0 AWG**

mm² Cu: **50**

Winding (mm²): **69-103**