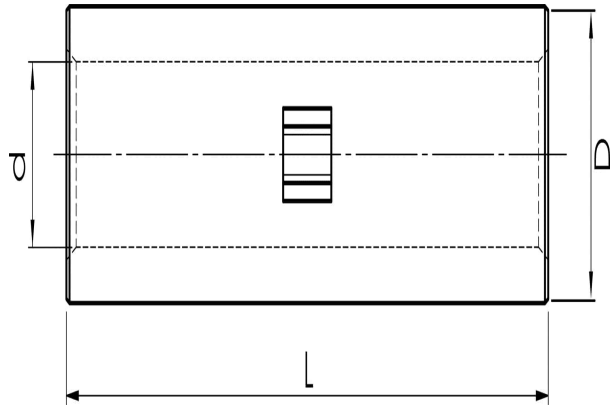


Joining sleeves 0.75 - 10 mm², KS/KSF through connectors 0.75 - 800 mm²

KS0,75

- ✓ Material: Cu 99.95%, tin plated Cu/Sn.
- ✓ Inspection hole and int. cable stop.
- ✓ For stranded (class 2) and multi-stranded (class 5) Cu conductors, for multi-stranded Cu conductors contact crimping using the Dual system is recommended.

Uninsulated through connector for multi-stranded (class 5) and stranded (class 2) Cu conductors, 0.75 mm². Used with certified tool DKB0325 or DKB0760.



Item number: **7303-000200**

EAN: **7393487007833**

d (mm): **1.3**

D (mm): **2,8**

L (mm): **14**

s (mm) - strip length: **7**

AWG/MCM Cu: **(22) - 18 AWG**

mm² Cu: **0,75**