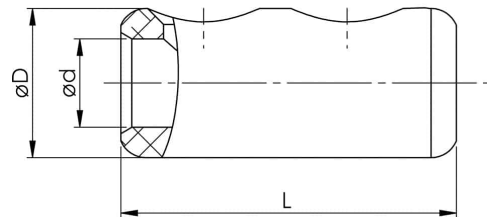
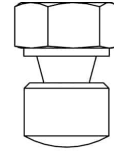
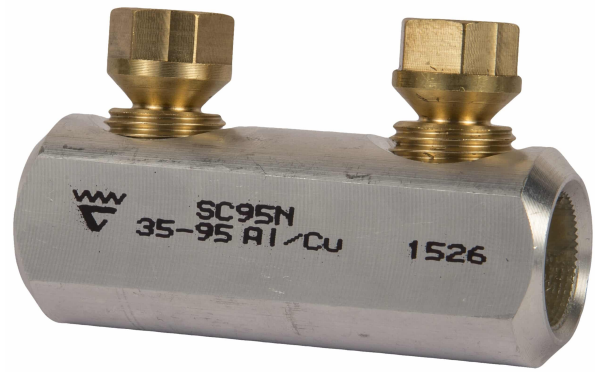


Shearbolt connectors 10 - 240 mm² (pre-assembled screw)

SC95N

- ✓ shearbolt material: brass, for minimum friction
- ✓ pre-threaded shear-off shearbolts for easy handling
- ✓ with partition wall
- ✓ voltage range: 1 kV
- ✓ meets the requirements of IEC standard 61238-1:2003

Shearbolt connector 1 kV that is suitable for both Al and Cu class 1 and class 2 cable. Round cable 35-95 mm², sector shaped cable 50-95 mm². When splicing screen conductors 6-35 mm², filling bit SC95N/PEN is used for splicing the copper screen of the cable.



Item number: **7320-011500**

EAN: **7393487049284**

d (mm): **16.8**

D (mm): **23,0**

L (mm): **69**

s (mm) - strip length: **31**

Max voltage (kV): **1**

Screen conductor (mm²): **57-95**

Screen conductor (with filling piece), Min (mm²): **16-50 (SC95N/PEN)**

Screen conductor (with filling piece), Max (mm²): **16-50 (SC95N/PEN)**

Cable type Round (mm²): **35-95**

Cable type Sector (mm²): **50-95**