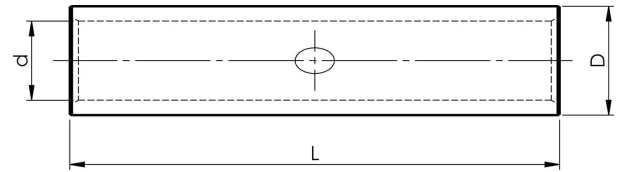


KSX through connectors for Excel and Fxcel cable  
10 - 16 mm<sup>2</sup>



# KSX16

- ✓ Material: Cu 99.95%, tin plated Cu/Sn.
- ✓ With internal cable stop.
- ✓ Mounted pull-strain relieved.

Uninsulated through connector for Cu conductors  
16 mm<sup>2</sup> stranded (Fxcel). Used with Elpress  
certified systems V600, V1300, V250.



Item number: **7303-111600**  
EAN: **7393487035560**

d (mm): **5.5**  
D (mm): **8,5**  
L (mm): **65**  
s (mm) - strip length: **30**

Marking: **16x8,5**

AWG/MCM Cu: **6 AWG**  
mm<sup>2</sup> Cu: **16**