

KSD through connectors 16 - 1000 mm<sup>2</sup>

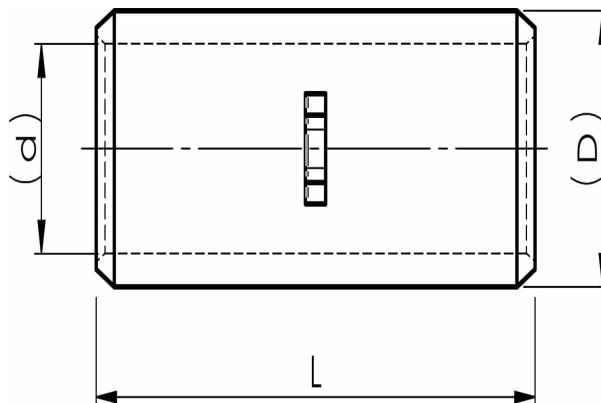
# KSD95

- ✓ Material: Cu 99.95%, tin plated Cu/Sn.
- ✓ For stranded (class 2) Cu conductors.
- ✓ Cable inspection hole and cable stop.

**Examples of marking: 14 70 (Elpress logotype is included on the marking.)**

14 = Die No. 70 = mm<sup>2</sup>

Uninsulated through connector for stranded (class 2) Cu conductors, 95 mm<sup>2</sup>. Used with Elpress certified systems V600, V1300 or V250.



Item number: **7303-002300**

EAN: **7393487008045**

d (mm): **13**

D (mm): **16**

L (mm): **55**

s (mm) - strip length: **26**

AWG/MCM Cu: **4/0 AWG**

mm<sup>2</sup> Cu: **95**