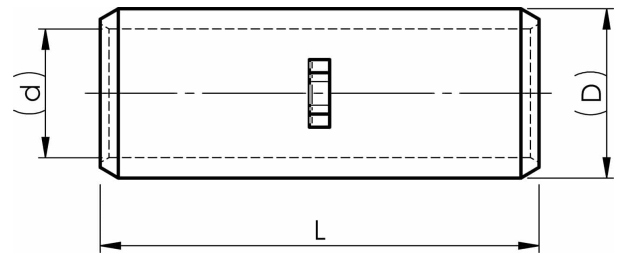


KSD through connectors 16 - 1000 mm²

KSD500

- ✓ Material: Cu 99.95%, tin plated Cu/Sn.
- ✓ For stranded (class 2) Cu conductors.
- ✓ Cable inspection hole and cable stop.



Examples of marking: 14 70 (Elpress logotype is included on the marking.)

14 = Die No. 70 = mm²

Uninsulated through connector for stranded (class 2) Cu conductors, 500 mm². Used with Elpress certified systems V250 or V1470.



Item number: **7303-233000**

EAN: **7393487011830**

d (mm): **31**

D (mm): **40**

L (mm): **135**

s (mm) - strip length: **64.5**

AWG/MCM Cu: **950 MCM**

mm² Cu: **500**