

KSD through connectors 16 - 1000 mm²

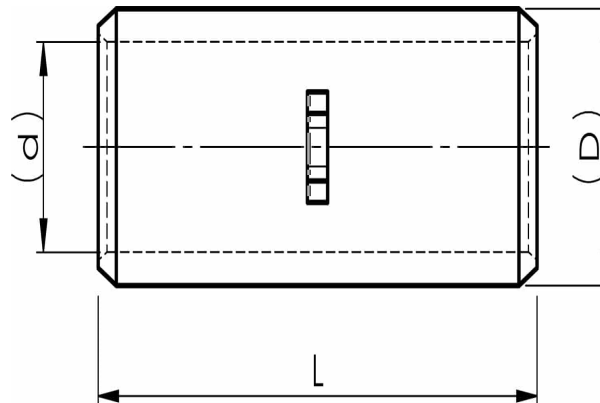
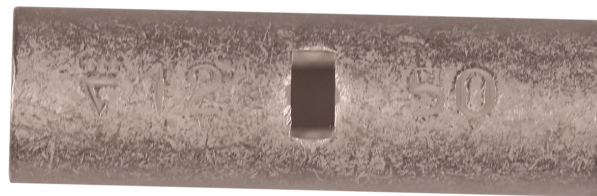
KSD50

- ✓ Material: Cu 99.95%, tin plated Cu/Sn.
- ✓ For stranded (class 2) Cu conductors.
- ✓ Cable inspection hole and cable stop.

Examples of marking: 14 70 (Elpress logotype is included on the marking.)

14 = Die No. 70 = mm²

Uninsulated through connector for stranded (class 2) Cu conductors, 50 mm². Used with Elpress certified systems V600, V1300 or V250.



Item number: **7303-002100**

EAN: **7393487008021**

d (mm): **9.5**

D (mm): **12**

L (mm): **40**

s (mm) - strip length: **19**

AWG/MCM Cu: **1/0 AWG**

mm² Cu: **50**