

KS/KSF through connectors 0.75 - 800 mm<sup>2</sup>

# KSF240A

- ✓ Material: Cu 99.95%, tin plated Cu/Sn.
- ✓ Inspection hole and int. cable stop.
- ✓ For stranded (class 2) and multi-stranded (class 5) Cu conductors, for multi-stranded Cu conductors contact crimping using the Dual system is recommended
- ✓ UL-approved, DNV approved.



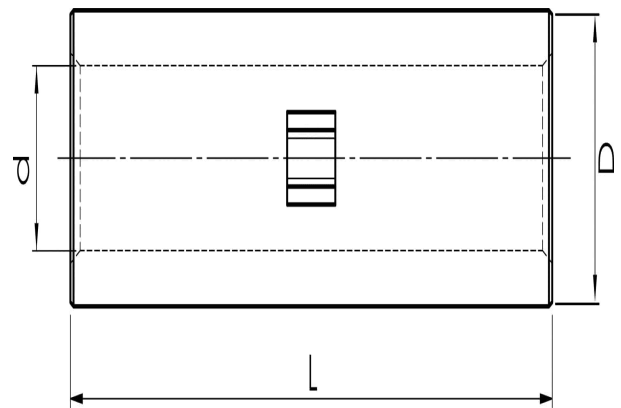
## Examples of marking: 20 95F (Elpress logotype is included on the marking.)

20 = Die No. 95 = mm<sup>2</sup> F = type KSF for stranded and flexible conductors 111 = screen mm<sup>2</sup>

Uninsulated through connector for multi-stranded (class 5) and stranded (class 2) Cu conductors, 240 mm<sup>2</sup>. Used with Elpress certified systems V1300, V250.



**UK  
CA**



Item number: **7303-231100**

EAN: **7393487030145**

d (mm): **22.5**

D (mm): **29**

L (mm): **70**

s (mm) - strip length: **35**

AWG/MCM Cu: **450 MCM**

mm<sup>2</sup> Cu: **240**

**ELPRESS**