

KRF tube terminals 16 - 800 mm²

KRF500-24

- ✓ Material: Cu 99.95%, tin plated Cu/Sn.
- ✓ With inspection holes.
- ✓ For stranded (class 2), multi-stranded (class 5) and very flexible (class 6) Cu conductors according to IEC 60228.

Example of marking KRF: 17 (neck) Elpress logotype 70 10F (palm)

17 = Die No. 70 = mm² 10 = palm hole for M10 F = type KRF for stranded, flexible and very flexible conductors.



Item number: **7301-230300**

EAN: **7393487089716**

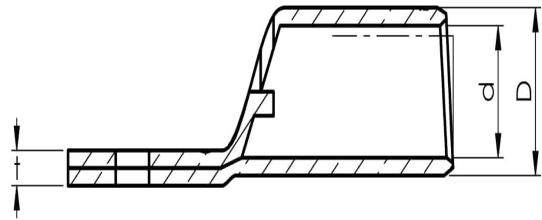
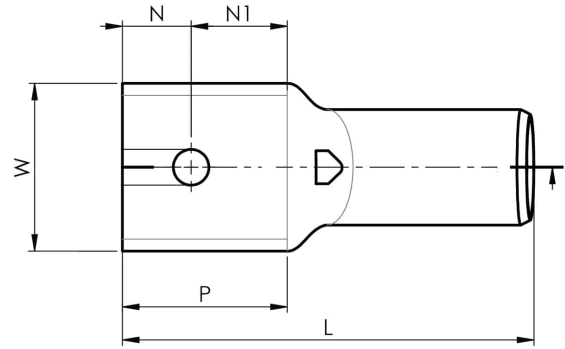
W (mm): **61**
N (mm): **25**
N1 (mm): **35**
P (mm): **60**
f (mm): **2.5**
d (mm): **33**
D (mm): **42**
L (mm): **150**
t (mm) - palm thickness: **8.8**
s (mm) - strip length: **70**

Screw: **M24**

Inspection hole: **Yes**

AWG/MCM Cu: **950 MCM**

mm² Cu: **500**



ELPRESS