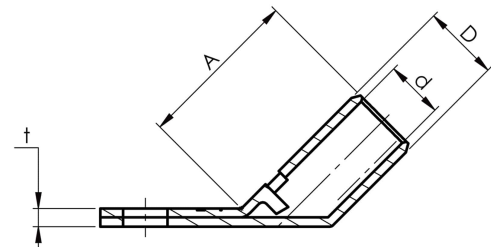
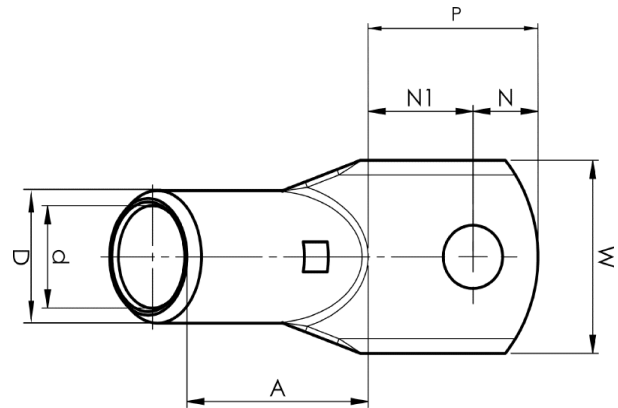


KRF angled terminals 45°

# KRF50-8- 45GR

- ✓ Material: Cu 99.95%, tin plated Cu/Sn.
- ✓ Inspection hole
- ✓ For stranded (class 2) and multi-stranded (class 5) Cu conductors, for multi-stranded Cu conductors contact crimping using the Dual system is recommended.
- ✓ UL-approved, DNV approved.



## Example of marking KRF: 17 (neck) Elpress logo 70 10F (palm)

17 = Die No. 70 = mm<sup>2</sup> 10 = palm hole for M10 F = type KRF for stranded and flexible conductors.

Angled tube terminal 45° for multi-stranded (class 5) and stranded (class 2) Cu conductors (acc. to IEC 60228), 50 mm<sup>2</sup>, with an M8 hole in the palm.

Used with Elpress certified systems V600, V1300, V250.



**UK  
CA**

Item number: **7301-126600**

EAN: **7393487016187**

A (mm): **31**

W (mm): **21**

N (mm): **8.5**

N1 (mm): **17.5**

P (mm): **26**

d (mm): **11**

D (mm): **14,5**

t (mm) - palm thickness: **3.4**

s (mm) - strip length: **19**

Screw: **M8**

Angle (°): **45**

Inspection hole: **Yes**

AWG/MCM Cu: **1/0 AWG**

mm<sup>2</sup> Cu: **50**

**ELPRESS**