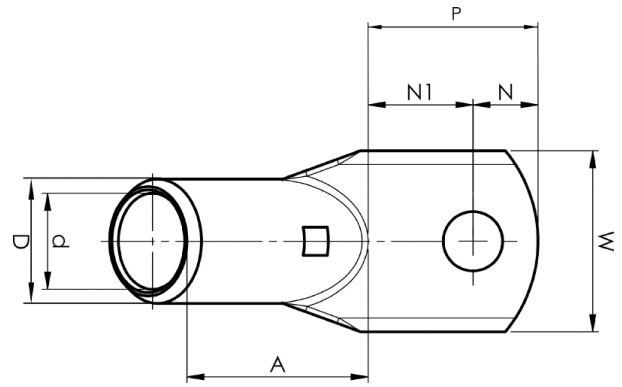


KRF angled terminals 45°

# KRF300A-16- 45GR



Item number: **7301-531000**

EAN: **7393487089501**

A (mm): **59**

W (mm): **46**

N (mm): **20**

N1 (mm): **25**

P (mm): **45**

d (mm): **24.5**

D (mm): **31,5**

t (mm) - palm thickness: **6.8**

s (mm) - strip length: **40**

Screw: **M16**

Angle (°): **45**

Inspection hole: **Yes**

AWG/MCM Cu: **550 MCM**

mm<sup>2</sup> Cu: **300**