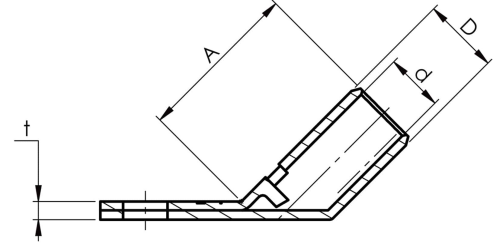


KRF angled terminals 45°

KRF25-6- 45GR

- ✓ Material: Cu 99.95%, tin plated Cu/Sn.
- ✓ Inspection hole
- ✓ For stranded (class 2) and multi-stranded (class 5) Cu conductors, for multi-stranded Cu conductors contact crimping using the Dual system is recommended.

- ✓ DNV approved.

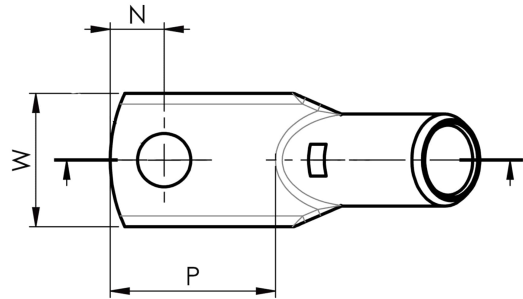


Example of marking KRF: 17 (neck) Elpress logo 70 10F (palm)

17 = Die No. 70 = mm² 10 = palm hole for M10 F = type KRF for stranded and flexible conductors.

Angled tube terminal 45° for multi-stranded (class 5) and stranded (class 2) Cu conductors (acc. to IEC 60228), 25 mm², with an M6 hole in the palm.

Used with Elpress certified systems V600, V1300, V250.



UK
CA

Item number: **7301-125800**

EAN: **7393487016125**

A (mm): **24**

W (mm): **16**

N (mm): **6.5**

N1 (mm): **11.5**

P (mm): **18**

d (mm): **8**

D (mm): **11**

t (mm) - palm thickness: **2.7**

s (mm) - strip length: **13**

Screw: **M6**

Angle (°): **45**

Inspection hole: **Yes**

AWG/MCM Cu: **4 AWG**

mm² Cu: **25**

ELPRESS