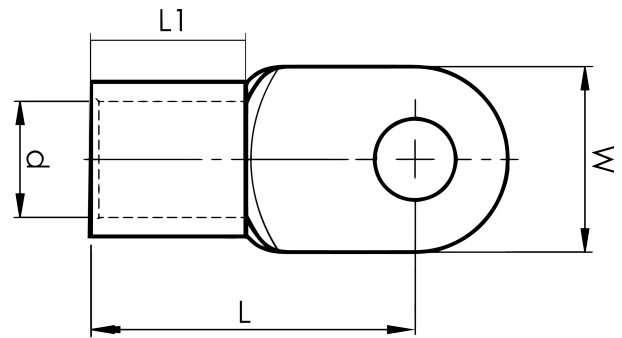


DIN 46234 sheet metal terminals 10 - 185 mm<sup>2</sup>

# B25-10R

- ✓ dimensions according to DIN 46234
- ✓ material: 99.9% Cu, tin plated (Cu/Sn)



Sheet metal terminal for 25 mm<sup>2</sup> copper conductors with an M10 hole in the palm. Used with Elpress certified systems V600, V1300 or V250.



Item number: **7258-266800**  
EAN: **7393487018587**

W (mm): **18**  
d (mm): **7.5**  
L1 (mm): **11**  
L (mm): **26**  
t (mm) - palm thickness: **1.5**

Screw: **M10**  
Marking: **25**

AWG/MCM Cu: **4 AWG**  
mm<sup>2</sup> Cu: **25**